

Preliminary

Philips myLiving
Spot light

Phase

black
LED

myLiving



53302/30/16

Decorate your home with light

The cylindrical Philips myLiving Phase dual spot in black has individually directionable lights and works with any dimmer. Its LEDs consume just a few watts of power while producing warm white light that's bright and beautiful like halogen

Designed for you living- and bedroom

- Create a stylish and welcoming atmosphere
- Perfect to relax and socialise

Sustainable light solutions

- High quality LED light
- Philips offers 5 year warranty on the LED module and driver
- Energy saving
- Warm white light
- Compatible with most dimmers

Special characteristics

- click!FIX system for easy installation
- Adjustable spot head

PHILIPS

Highlights

High quality LED light



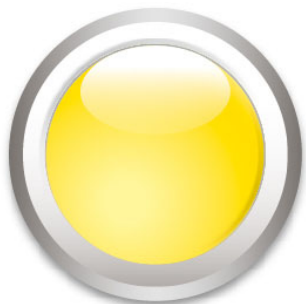
The LED technology, integrated into this Philips lamp, is a uniquely developed solution by Philips. While instantly turned on, it enables an optimal light output and brings out vivid colors in your home.

5 year warranty on LED system



On top of the standard 2 year warranty for this lamp, Philips offers 5 year warranty on the LED system, meaning the LED module and the driver in this lamp.

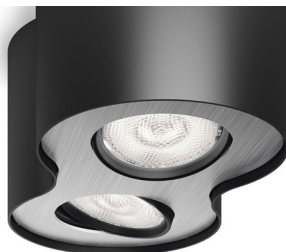
Warm white light



Light can have different color temperatures, indicated in units called Kelvin (K). Lamps with a low Kelvin value produce a warm, more cosy

light, while those with a higher Kelvin value produce a cool, more energising light. This Philips lamp offers warm white light for a cosy atmosphere.

Adjustable spot head



Direct the light where you want it most by simply adjusting, rotating or tilting the spot head of the lamp.

Compatible with most dimmers



This Philips LED light includes the latest LED technology, working with most dimmers. Simply use your current dimmer, or any type of dimmer you want!

Easy to mount - click!FIX



This LED light makes use of click!FIX, a new and revolutionary mounting system, patented by Philips. With click!FIX you can easily mount your light in 4 simple steps. It's easy and quick!

Energy saving



This Philips energy saving lamp conserves energy compared to traditional light sources, helping you to save money on your electricity bills and do your bit for the environment.

Create a stylish atmosphere



This light is designed around the latest tastes, trends and lifestyles to blend effortlessly into your décor and define the localised ambiance you have always desired.

Specifications

Design and finishing

- Material: metal
- Color: black

Extra feature/accessory incl.

- Compatible with most dimmers
- LED integrated
- 5 years warranty on the LED module
- Adjustable spot head
- click!FIX mounting

Product dimensions & weight

- Height: 8.0 cm
- Length: 19.2 cm
- Width: 10.2 cm
- Net weight: 0.900 kg

Technical specifications

- Mains power: Range 220 V - 240 V, 50-60 Hz
- Bulb technology: LED, Safety Extra Low Voltage
- Number of bulbs: 2
- Wattage bulb included: 4.5 W
- Light color: warm white

- Beam angle: 40°
- Total lumen output fixture: 1000 lm
- Fixture dimmable
- LED
- Lifetime up to: 30,000 hrs
- IP code: IP20, protection against objects bigger than 12.5 mm, no protection against water
- Class of protection: I - earthed
- Light source equivalent to traditional bulb of: 30 W

Service

- Warranty: 2 year(s)

Packaging dimensions & weight

- Height: 20.8 cm
- Length: 11.3 cm
- Width: 8.3 cm
- Weight: 1.200 kg

Miscellaneous

- Especially designed for: Living- & Bedroom
- Style: Modern
- Type: Spot light



Issue date 2017-02-13
Owner: Tom Raman
Version: 4.0.1

12 NC: 9150 049 35101
EAN: 87 18696 12519 9

Test leaflet, for internal use only!
© 2017 Philips Lighting Holding B.V.
All Rights reserved.

Specifications are subject to change without notice.
Trademarks are the property of Philips Lighting Holding B.V. or their respective owners.

www.philips.com