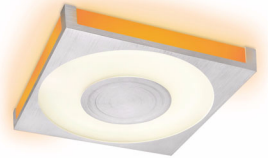
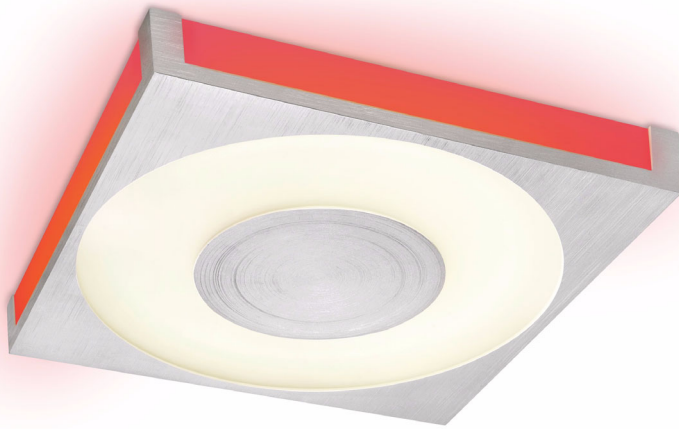


Philips
Ceiling light

32510/48/86



Saving in style

Unwind to the clean, soft radiance of this elegant lamp of premium sand-blasted glass, accented with winding brown brushed steel piping for a delicate touch. Make your selection from various designs in ceiling or wall models.

Energy saving

- Designed for use with energy-saving light bulbs
- 80% energy saving, compared to traditional light sources
- Energy-saving light bulb included

Link ambiance and convenience

- Instant, flicker-free start, with an electronic ballast

Ambiant light effect

- Exchangeable color filters to complement your décor
- Ambient lighting

Match your interior style

- Elegant and modern design
- Complete range of coordinated designs available
- Available in various sizes

PHILIPS
sense and simplicity

Specifications

Technical specifications

- Wattage: 60 W
- Class of protection: I
- Lamp holder: 2GX13
- Light source: Fluorescent
- Location: Bedroom, Living room, Study room, Dining room
- Number of lamps: 1
- Placement: Ceiling
- Power supply: 240 V
- Style: modern
- Collection
- Indoor
- Type: ceiling light

- Price range: premium
- Frequency: 50/60 Hz

Accessories included

- Lamp(s)

Design and finishing

- Material: Aluminum
- Color: Aluminum

Product Dimensions and weight

- Width: 454 mm
- Height: 60 mm
- Length: 454 mm
- Weight: 6500 g

Highlights

Made for energy-saving bulbs

Designed for use with energy-saving light bulbs

80% energy saving

80% energy saving, compared to traditional light sources

Energy-saving bulbs included

Energy-saving light bulb included

Instant, flicker-free start

Instant, flicker-free start, with an electronic ballast

Color filters included

Exchangeable color filters to complement your décor

Ambient lighting

Ambient lighting

Contemporary appeal

Elegant and modern design

Coordinated range

Complete range of coordinated designs available

Available in various sizes

Available in various sizes



Issue date 2011-08-11

Version: 1.0.1

12 NC: 9150 027 65601
EAN: 87 17943 74829 7

© 2011 Koninklijke Philips Electronics N.V.
All Rights reserved.

Specifications are subject to change without notice.
Trademarks are the property of Koninklijke Philips
Electronics N.V. or their respective owners.

www.philips.com