

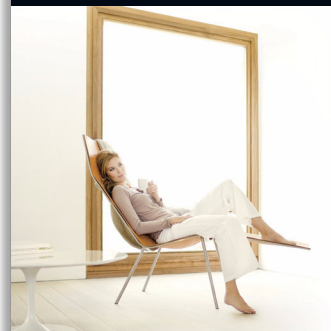


Philips Ledino
Spot light

69072 40K

white
LED

Ledino



69072/31/86



Giving light a new experience

Twist and turn, for precision. Each individual spot is mounted on a 360° turning circle, so you can direct light precisely where you want it with a simple twist of the wrist.

Elegant design meets innovative technology

- High Power LED
- High light quality with strong light output
- The perfect beam angle for spot lighting (40°)
- Rotates freely in any direction
- Cool white light effect

Sustainable light solutions

- Extremely long operating life
- Saves up to 80% energy

PHILIPS

Highlights

Extremely long operating life



A light source you can trust. Philips LED lights offer an extremely long-life of at least 20.000 hours (which equals 20 years on basis of an average use of 3 hours / day with an amount of at least of 13.000 on/off switching cycles). With the Philips LED lights you won't have to worry about maintenance or lamp replacement while having the perfect light ambiance in your home.

High light quality



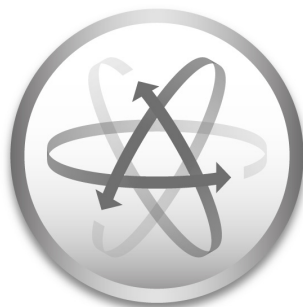
A LED lighting module of 7.5W produces the equivalent light output as an 40W incandescent lamp (350 Lumen). Save energy with strong light output.

High Power LED



The LED module of this lamp is a uniquely developed solution by Philips combining 3 LEDs in a synthetic and aluminium housing. This technique enables an optimal light output and a 100% uniform light colour.

Rotates freely



You can rotate the lamp head of the Philips lighting fixture in the desired direction and bring light where needed.

Saves up to 80% energy



The LED lighting technology used in Philips lighting fixtures is highly energy-efficient

(7.5 W module produces 350 Lumen). As a result, every lighting fixture conserves energy, helping consumers to save money on their electricity bills and contribute to preserving the environment. For home lighting that's energy-efficient and provides great light in a range of contemporary designs, look for Philips LED products.

The perfect beam angle



The perfect beam angle for spot lighting (40°)

Cool white light effect



Light up your home with cool white light effects thanks to the latest LED innovation. Philips introduces the latest generation of cool white light high power LEDs, reaching a color temperature of 4000 Kelvin. This innovation brings our luminaires to the next level, allowing you to combine elegance and ambience creation with light and energy efficiency.

Specifications

Design and finishing

- Material: aluminium
- Color: white

Product dimensions & weight

- Height: 7.3 cm
- Length: 31.5 cm
- Width: 13.3 cm
- Net weight: 1.110 kg

Technical specifications

- Mains power: Range 220 V - 240 V, 50-60 Hz
- Bulb technology: LED, 240 V
- Number of bulbs: 2
- Wattage bulb included: 7.5 W
- Light color: cool white
- Lamp lifetime up to: 20,000 hrs
- Beam angle: 40°
- Fixture dimmable

- LED
- IP code: IP20, protection against objects bigger than 12.5 mm, no protection against water
- Class of protection: I - earthed

Service

- Warranty: 1 year(s)

Packaging dimensions & weight

- Height: 32.9 cm
- Length: 14.6 cm
- Width: 9.3 cm
- Weight: 1.400 kg

Miscellaneous

- Especially designed for: Living- & Bedroom
- Style: Modern
- Type: Spot light



Issue date 2014-08-20

Version: 1.0.1

12 NC: 9150 026 80801
EAN: 87 17943 74461 9

© 2014 Koninklijke Philips N.V.
All Rights reserved.

Specifications are subject to change without notice.
Trademarks are the property of Koninklijke Philips N.V.
or their respective owners.

www.philips.com