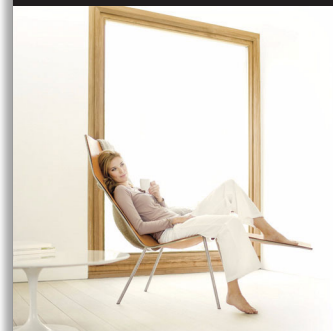




Philips Ledino
Wall light

Ledino



69089/11/66



Giving light a new experience

This thin, delicate wall light made from premium aluminium is curved gently outwards at the edges, like a sail caught in the breeze. This directs a wash of warm white light upwards and downwards, creating a pleasing silhouette on your wall.

Elegant design meets innovative technology

- High Power LED
- High light quality with strong light output
- On/off switch on article
- Up and down light effect
- Cool white light effect

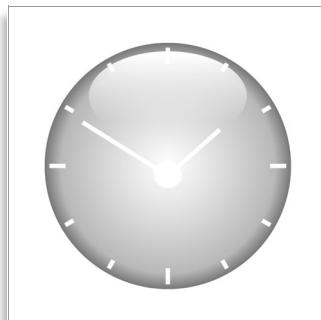
Sustainable light solutions

- Extremely long operating life
- Saves up to 80% energy

PHILIPS
sense and simplicity

Highlights

Extremely long operating life



A light source you can trust. Philips LED luminaires offer an extremely long-life of at least 20.000 hours (which equals 20 years on basis of an average use of 3 hours / day with an amount of at least of 13.000 on/off switching cycles). It feels so comfortable to think that you won't have to worry about maintenance or lamp replacement while having the perfect light ambiance in your home.

High light quality

A module of 7.5W produces the equivalent light output as an 40W incandescent lamp (350 Lumen) with strong light output.

High Power LED



The LED module is a uniquely developed solution by Philips combining 3 LEDs in a synthetic and aluminium housing. This technique enables an optimal light output and a 100% uniform light colour.

On/off switch on article

On/off switch on article

Saves up to 80% energy



The LED lighting technology used in Philips luminaires is highly energy-efficient (7.5 W module produces 350 Lumen). As a result, every luminaire conserves energy, helping consumers to save money on their electricity bills and contribute to preserving the environment. For home lighting that's energy-efficient and provides great light in a range of contemporary designs, look for Philips LED products.

Up and down light effect

Up and down light effect

Cool white light effect



Light up your home with cool white light effects thanks to the latest LED innovation. Philips introduces the latest generation of cool white light high power LEDs, reaching a color temperature of 4000 Kelvin. This innovation brings our luminaires to the next level, allowing you to combine elegance and ambience creation with light and energy efficiency.

Specifications

Power

- Power supply: 220-240V, 50/60 Hz
- Output: SELV
- Energy consumption: 2x 2,5W
- Class of protection: I

Design and finishing

- Material: aluminium
- Color(s): chrome

Technical specifications

- Light source: 2 LED's
- Light color: 4000k cool white
- Life span: 20 years
- Style: modern
- Price range: premium
- Room: bed and livingroom
- Type: wall light
- IP code: IP20

Extra features

- Warranty: 2 year(s)

Product dimensions and weight

- Height: 19,5 cm
- Length: 13 cm
- Width: 5,5 cm



Issue date 2011-07-08

Version: 1.0.1

12 NC: 9150 027 62801
EAN: 69 47830 40793 4

© 2011 Koninklijke Philips Electronics N.V.
All Rights reserved.

Specifications are subject to change without notice.
Trademarks are the property of Koninklijke Philips Electronics N.V. or their respective owners.

www.philips.com