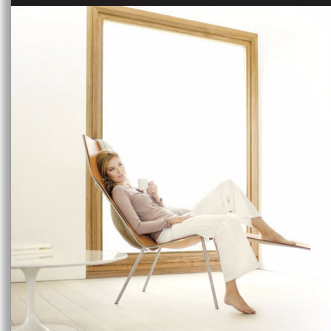




Philips Ledino  
Spot light

**Ledino**



69093/31/66

## Giving light a new experience

Elegant and delicate, these slim cutaway discs in premium aluminium contain smaller circles of LED light suspended inside them. Designed for ceilings and walls, these striking spotlights make a sleek statement of style in any home.

### **Elegant design meets innovative technology**

- High Power LED
- High light quality with strong light output
- On/off switch on article
- The perfect beam angle for spot lighting (40°)
- Adjustable light intensity with dimmer switch
- Rotates freely in any direction
- Flexible arm
- Cool white light effect

### **Sustainable light solutions**

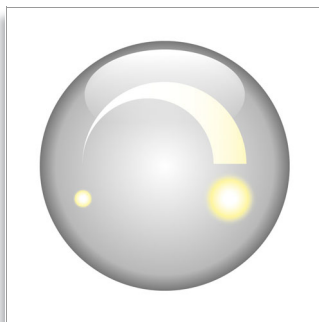
- Extremely long operating life
- Saves up to 80% energy



**PHILIPS**  
sense and simplicity

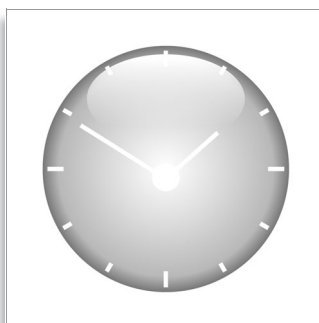
# Highlights

## Dimmable



Most Philips LED luminaires are dimmable, which means that their light level can be adjusted with a dimmer switch. The dimming indication is always mentioned on the product packaging and in the manual that is delivered in the box. Most Philips LED luminaires can be dimmed by means of an external trailing edge wall dimmer (not included in the product box). These dimmers are compatible with electronic (capacitive) transformers and LED drivers. Philips tested a number of wall dimmers that have proved to be compliant. A list of compatible dimmers is available in the downloads and support section.

## Extremely long operating life



A light source you can trust. Philips LED luminaires offer an extremely long-life of at least 20.000 hours (which equals 20 years on basis of an average use of 3 hours / day with an amount of at least of 13.000 on/off switching cycles). It feels so comfortable to think that you won't have to worry about maintenance or lamp replacement while having the perfect light ambiance in your home.

## Flexible arm



Flexible arm

## High light quality

A module of 7.5W produces the equivalent light output as an 40W incandescent lamp (350 Lumen) with strong light output.

## High Power LED

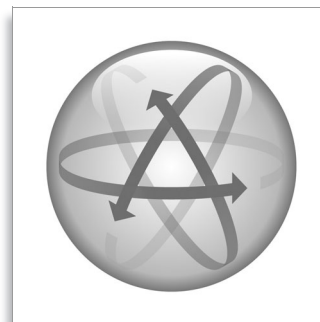


The LED module is a uniquely developed solution by Philips combining 3 LEDs in a synthetic and aluminium housing. This technique enables an optimal light output and a 100% uniform light colour.

## On/off switch on article

On/off switch on article

## Rotates freely



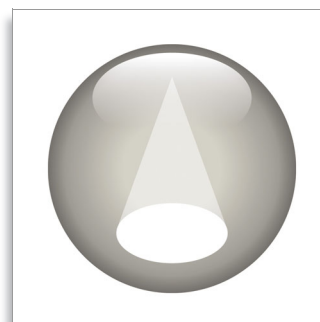
Rotates freely in any direction

## Saves up to 80% energy



The LED lighting technology used in Philips luminaires is highly energy-efficient (7.5 W module produces 350 Lumen). As a result, every luminaire conserves energy, helping consumers to save money on their electricity bills and contribute to preserving the environment. For home lighting that's energy-efficient and provides great light in a range of contemporary designs, look for Philips LED products.

## The perfect beam angle



The perfect beam angle for spot lighting (40°)

# Specifications

## Power

- Power supply: 220-240V, 50/60 Hz
- Output: SELV
- Energy consumption: 1x 7,5W
- Class of protection: I

## Design and finishing

- Material: aluminium
- Color(s): white

## Technical specifications

- Light source: 2 LED's
- Light color: 4000k cool white
- Life span: 20 years

- Style: modern
- Price range: premium
- Room: bed and livingroom
- Type: wall light, spot light
- IP code: IP20

## Extra features

- Warranty: 2 year(s)

## Product dimensions and weight

- Height: 18 cm
- Length: 9,5 cm
- Width: 37 cm



Issue date 2011-07-08

Version: 1.0.1

12 NC: 9150 027 63201  
EAN: 69 47830 41033 0

© 2011 Koninklijke Philips Electronics N.V.  
All Rights reserved.

Specifications are subject to change without notice.  
Trademarks are the property of Koninklijke Philips  
Electronics N.V. or their respective owners.

[www.philips.com](http://www.philips.com)