

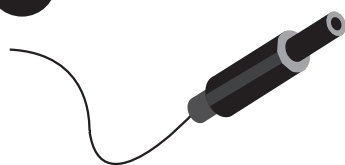
### INSTRUCTIONS FOR USE

1



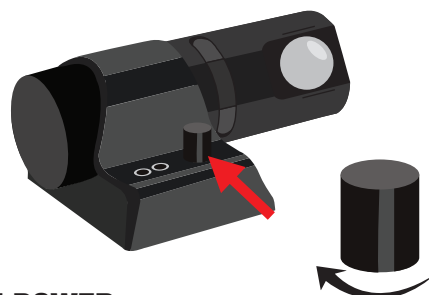
**PLACE ONE  
AAA BATTERY**

2



**INSERT DC PLUG  
IN PROJECTOR**

3



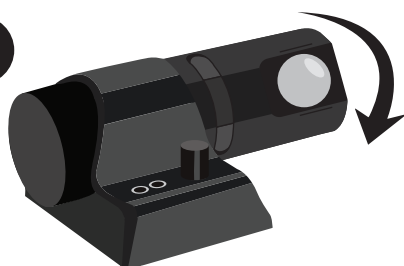
**TURN ON POWER  
AND TURN TO ADJUST LIGHT INTENSITY**

4



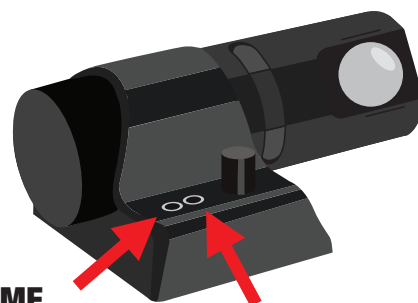
**TURN TO SHARPEN  
PROJECTION**

5



**TURN LEFT AND RIGHT  
TO ADJUST PROJECTION ANGLE**

6

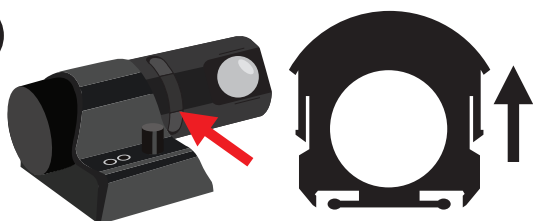


**SET TIME**

Push the button and the minute hand will move forward by one minute, hold the button and the minute hand will move forward rapidly.

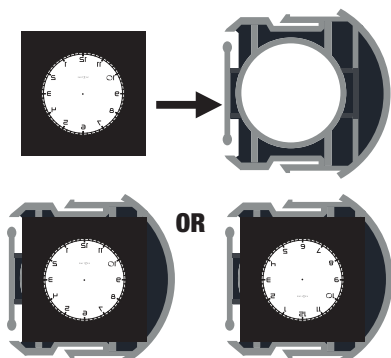
### CHANGE THE DIAL

1



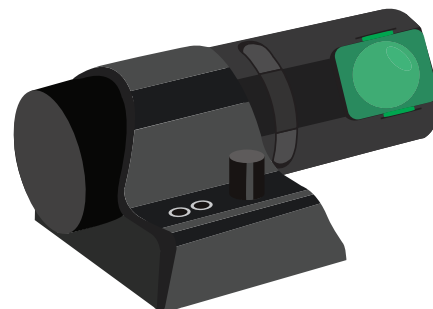
**PULL OUT THE DIAL CONTAINER  
TO REPLACE THE DIAL**

2



**NOTE:** Depending on the projection angle, the need to change the image orientation.

### CHANGE SCREENS



**INSTALL THE COLOR SCREEN,  
TO CHANGE THE PROJECTION EFFECT**