



Essential LED tubes T5 Mains

ESSENTIAL LEDtube 1200mm 16W840 G5 I MX

The Essential LEDtube T5 is an affordable LED solution suitable for replacing T5 fluorescent lamps. Thanks to a unique design, Philips Essential LED tube T5 Mains can be directly installed in luminaires operating on mains power connection. The product provides a natural lighting effect for use in general lighting applications, as well as instant energy savings – an environmentally friendly solution.

Product data

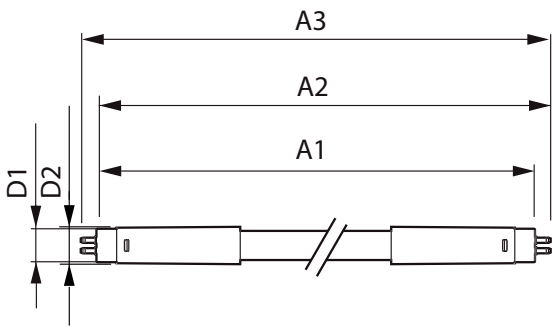
General Information		Lamp Current (Max)		175 mA
Cap-Base	G5 [G5]	Lamp Current (Min)		70 mA
Nominal Lifetime (Nom)	30000 h	Starting Time (Nom)		0.5 s
Switching Cycle	50000X	Warm Up Time to 60% Light (Nom)		0.5 s
B50L70	30000 h	Power Factor (Nom)		0.92
Light Technical		Voltage (Nom)		100-240 V
Color Code	840 [CCT of 4000K]	Temperature		
Luminous Flux (Nom)	1850 lm	T-Ambient (Max)		45 °C
Luminous Flux (Rated) (Nom)	1850 lm	T-Ambient (Min)		-20 °C
Correlated Color Temperature (Nom)	4000 K	T-Storage (Max)		65 °C
Color Consistency	<6	T-Storage (Min)		-40 °C
Color Rendering Index (Nom)	80	T-Case Maximum (Nom)		70 °C
LLMF At End Of Nominal Lifetime (Nom)	70 %	Controls and Dimming		
Operating and Electrical		Dimmable		No
Input Frequency	50 to 60 Hz			
Power (Rated) (Nom)	16 W			

Essential LED tubes T5 Mains

Mechanical and Housing	
Product Length	1100 mm
Approval and Application	
Energy Saving Product	Yes
Energy Efficiency Label (EEL)	A+
Approval Marks	CE marking RoHS compliance KEMA Keur certificate
Product Data	
Full product code	871869666752100

Order product name	ESSENTIAL LEDtube 1200mm 16W840 G5 I MX
EAN/UPC - Product	8718696667521
Order code	929001275212
Numerator - Quantity Per Pack	1
Numerator - Packs per outer box	20
Material Nr. (12NC)	929001275212
Net Weight (Piece)	0.155 kg

Dimensional drawing



Product	D1	D2	A1	A2	A3
ESSENTIAL LEDtube 1200mm 16W840 G5 I MX	15.8 mm	19 mm	1149 mm	1156.1 mm	1163.2 mm

TLED 100-240V 16-28W 4000K G5 ND

