



Philips Connected
Luminaires
White ambiance Being
Ceiling light

Ceiling light



32610/48/P7

Light for your moments

from sunrise to sunset

Include the Being Philips Hue white ambiance ceiling in your Philips Hue system and enjoy natural white light that helps you to wake up, energise, concentrate, read and relax. Enjoy this elegant design and nice light glow on your ceiling

High-quality light and design

- High light output

Light for your moments

- Easy and wireless control with the dimmer switch (included)
- Relax, read, concentrate and energise with light recipes

Full control from smart device with Hue bridge

- Full control from smart device with Hue bridge
- Create your ambience with warm white to cool daylight
- Smart control, home and away
- Set timers for your convenience
- Control it your way
- Wake up and go to sleep naturally

PHILIPS

Highlights

High light output

High-quality light with strong light output, providing plenty of white light for any moment or task.

Dimmer switch (included)



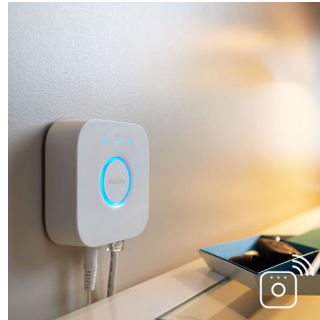
With the battery-powered dimmer switch for Philips Hue, you can control the light of your white Ambiance lamps easily. Cycle through the 4 different light scenes by simply pressing the on button, dim the light up or down and settle for ease of use. The dimmer switch can be placed anywhere in its small and elegant dock and needs no wiring. Use as a remote control or as a light switch against the wall and enjoy the right light recipe for every moment of your day. You can add up to 10 Hue lights to one dimmer switch.

Light for your daily routines



Light influences our mood and behaviour. Philips Hue can help you to customise your daily routines into moments you can enjoy. Skip your morning coffee and get ready for the day with cool, bright white daylight that helps to energise your body and mind. Stay focused with finely tuned bright white light. Or put your feet up and relax with a soft glow of white light for the perfect end to the day.

Full control with Hue bridge



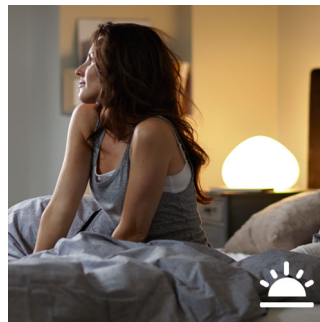
Connect your Philips Hue lights with the bridge to unlock the endless possibilities of the system.

Create your ambience



Set the right ambience for any moment and decorate your home with warm to cool white light. Enjoy different styles throughout the year, no matter if it's the crisp white light reminding you of a spring breeze, the warm white light of summer sun or the ice cool daylight of winter.

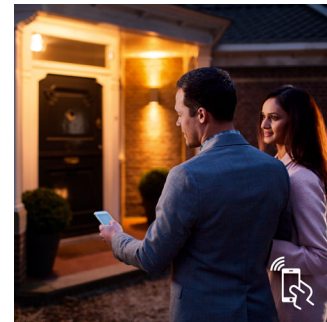
Wake up and go to sleep



Philips Hue will help get you out of bed the way you like to, helping you start your day feeling refreshed. The light brightness increases

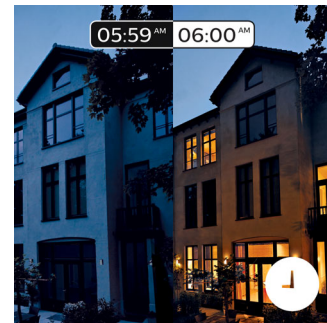
gradually, mimicking the effect of sunrise, and helps you wake up naturally, instead of being woken up by the loud sound of an alarm clock. Start your day the right way. In the evening, the relaxing warm white light helps you to unwind, relax and prepare your body for a good night's sleep. Connection with the Philips Hue bridge required for this functionality.

Smart control, home and away



With the Philips Hue iOS and Android apps, you can control your lights remotely wherever you are. Check if you have forgotten to switch your lights off before you left home and switch them on if you are working late. Connection with the Philips Hue bridge required for this functionality.

Timers for your convenience



Philips Hue can make it seem like you're home when you're not, using the schedule function in the Philips Hue app. Set the lights to come on at a pre-set time, so the lights are on when you arrive home. You can even set rooms to light up at different times. And of course, you can let the lights turn off gradually at night, so you never have to worry whether you've left any lights on. Connection with the Philips Hue bridge required for this functionality.

Specifications

Design and finishing

- Material: metal, synthetics
- Colour: aluminium

Extra feature/accessory incl.

- Dimmable with remote control
- Hue Switch
- LED integrated
- Perfectly suited for creating ambience
- Diffused light effect
- ZigBee Light Link
- Hue Switch Included
- Four light recipes
- Upgradeable with Philips HUE bridge

Product dimensions and weight

- Height: 5.1 cm
- Length: 34.8 cm
- Width: 34.8 cm
- Net weight: 1.792 kg

Technical specifications

- Mains power: Range 220 V–240 V, 50-60 Hz
- Number of bulbs: 1

- Wattage bulb included: 32 W
- Total lumen output fixture: 2400 lm
- Fixture dimmable
- LED
- Lifetime up to: 25,000 hrs
- IP code: IP20, protection against objects bigger than 12.5 mm, no protection against water
- Class of protection: I - earthed
- Battery type: CR - Button cell

Service

- Warranty: 2 year(s)

Packaging dimensions and weight

- Height: 40.1 cm
- Length: 38.6 cm
- Width: 8.8 cm
- Weight: 2.194 kg

Miscellaneous

- Especially designed for: Living Room and Bedroom, Kitchen
- Style: Contemporary
- Type: Ceiling light



Issue date 2017-11-21

Version: 2.0.1

12 NC: 9150 054 02401
EAN: 87 18696 15922 4

© 2017 Philips Lighting Holding B.V.
All Rights reserved.

Specifications are subject to change without notice.
Trademarks are the property of Philips Lighting Holding B.V. or their respective owners.

www.philips.com