

Philips Hue White  
ambiance  
Runner double spotlight

Dimmer switch included  
LED integrated  
White  
Smart control with Hue bridge\*

53092/31/P7



## Light for your moments

from sunrise to sunset

With Philips Hue White Ambiance spot Runner included in your Philips Hue system you can enjoy natural white light that helps you to wake up, energize, concentrate, read and relax. A high quality spot, build to last with attention to detail

### High quality light and design

- High light output

### Light for your moments

- Easy and wireless control with the dimmer switch (included)
- Relax, read, concentrate and energize with light recipes

### Full control from smart device with Hue bridge

- Full control from smart device with Hue bridge
- Create your ambiance with warm white to cool daylight
- Wake up and go to sleep naturally
- Smart control, home and away
- Set timers for your convenience
- Control it your way

# PHILIPS

Runner double spotlight  
Dimmer switch included LED integrated, White, Smart control with Hue bridge\*

5309231P7

# Highlights

## High light output

High quality light with strong light output, providing plenty of white light for any moment or task.

## Dimmer switch (included)



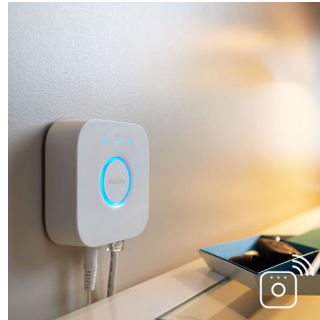
With the battery-powered dimmer switch for Philips Hue, you can control the light of your white ambiance lamps easily. Cycle through the 4 different light scenes by simply pressing the on-button, dim the light up or down and settle for ease of use. The dimmer switch can be placed anywhere in its small and elegant dock and needs no wiring. Use as a remote control or as a light switch against the wall and enjoy the right light recipe for every moment of your day. You can add up to 10 Hue lights to one dimmer switch.

## Light for your daily routines



Light influences our mood and behavior. Philips Hue can help you to customize your daily routines into moments you can enjoy. Skip your morning coffee and get ready for the day with cool, bright white daylight that helps to energize your body and mind. Stay focussed with finely tuned bright white light. Or put your feet up and relax with a soft glow of white light for the perfect end of the day.

## Full control with Hue bridge



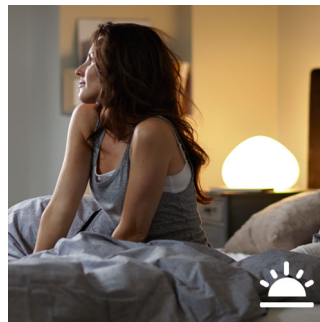
Connect your Philips Hue lights with the bridge to unlock the endless possibilities of the system.

## Create your ambiance



Set the right ambiance for any moment and decorate your home with warm to cool white light. Enjoy different styles throughout the year, no matter if it's the crisp white light reminding you of a spring breeze, the warm white light of a summer sun, or the ice cool daylight of winter.

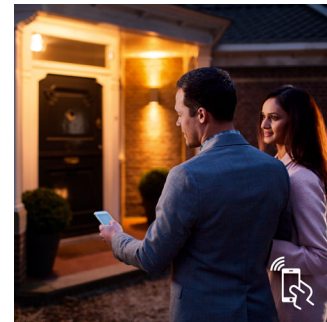
## Wake up and go to sleep



Philips Hue will help get you out of bed the way you like it, helping you start your day feeling refreshed. The light brightness increases

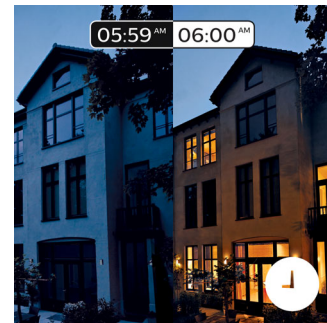
gradually mimicking the effect of sunrise and helps you wake up naturally, instead of being woken up by the loud sound of an alarm clock. Start your day, the right way. In the evening, the relaxing warm white light helps you to unwind, relax and prepare your body for a good night's sleep. Connection with the Philips Hue bridge required for this functionality.

## Smart control, home and away



With the Philips Hue iOS and Android apps you can control your lights remotely wherever you are. Check if you have forgotten to switch your lights off before you left your home, and switch them on if you are working late. Connection with the Philips Hue bridge required for this functionality.

## Timers for your convenience



Philips Hue can make it seem like you're home when you're not, using the schedule function in the Philips Hue app. Set the lights to come on at a pre-set time, so the lights are on when you arrive home. You can even set rooms to light up at different times. And of course, you can let the lights turn off gradually in the night, so you never have to worry whether you've left any lights on. Connection with the Philips Hue bridge required for this functionality.

# Specifications

## Design and finishing

- Material: metal
- Color: white

## Extra feature/accessory incl.

- Dimmable with remote control
- Hue Switch
- LED lamp(s) included
- Perfectly suited for ambiance creation
- Adjustable spot head
- ZigBee Light Link
- Hue Switch Included
- 4 light recipes
- Upgradeable with Philips HUE bridge

## Product dimensions & weight

- Height: 10.9 cm
- Length: 30.5 cm
- Width: 8.9 cm
- Net weight: 0.960 kg

## Technical specifications

- Mains power: Range 220 V - 240 V, 50-60 Hz
- Bulb technology: 230 V
- Number of bulbs: 2
- Fitting/cap: GU10
- Wattage bulb included: 5,5 W
- Maximum wattage replacement bulb: 50 W

- Light color: cool white
- Beam angle: 45°
- Fixture dimmable
- LED
- Built in LED
- Energy class included light source: built in LED + bulb of class A
- Fixture is compatible with bulb(s) of class: A+ to E
- Lifetime up to: 15,000 hrs
- IP code: IP20, protection against objects bigger than 12.5 mm, no protection against water
- Class of protection: I - earthed
- Light source equivalent to traditional bulb of: 25 W
- Lumen output bulb included: 250 lm

## Service

- Warranty: 2 year(s)

## Packaging dimensions & weight

- Height: 14.3 cm
- Length: 35.4 cm
- Width: 13.4 cm
- Weight: 1.094 kg

## Miscellaneous

- Especially designed for: Living- & Bedroom
- Style: Modern
- Type: Spot light



Issue date 2018-03-02

Version: 4.0.1

12 NC: 9150 054 03001  
EAN: 87 18696 15926 2

© 2018 Philips Lighting Holding B.V.  
All Rights reserved.

Specifications are subject to change without notice.  
Trademarks are the property of Philips Lighting Holding B.V. or their respective owners.

[www.philips.com](http://www.philips.com)

\*\*Hue bridge sold separately