

# REVER SUSPENDED 1.0

01-Feb.-2018

## REVER SUSPENDED 1.0

LED QA60 max. 15W | E27 | 220-240VAC | 50-60Hz | Dimmable  
| metalized / painted ABS (C/G/N/P/W/B) | Polycarbonate (TG/SG/CW/AY/HR)

CE IP20

### DIFFUSER COLOUR

tea green	6521ETG_
smoke grey	6521ESG_
champ. white	6521ECW_
amber yellow	6521EAY_
hip rose	6521EHR_

### SUSPENSION RING COLOUR

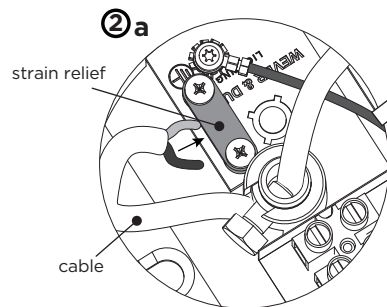
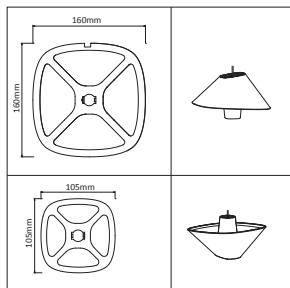
CHROME	C_
BLACK CHROME	N_
LIGHT GOLD	G_
PINK COPPER	P_
WHITE	W_
BLACK	B_

### CABLE COLOUR

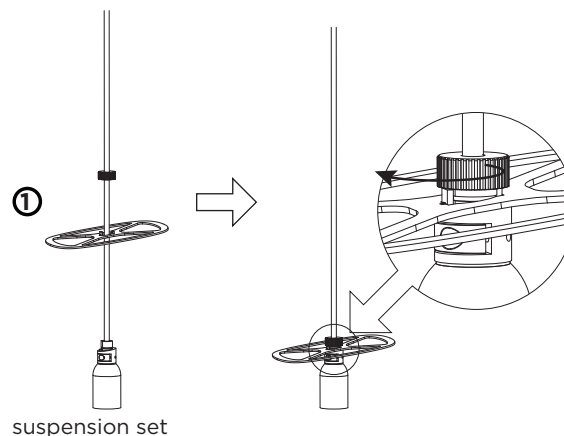
WHITE	_W
BLACK	_B

### suspension frame

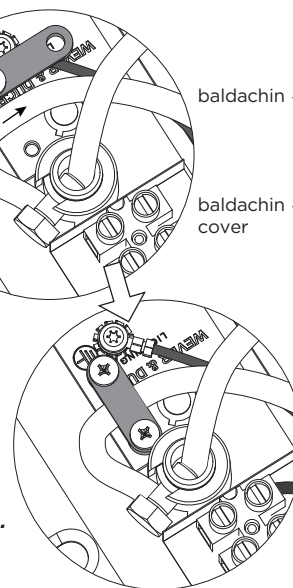
There are two hanging directions for the diffuser. Select the appropriate suspension frame according to the direction of the diffuser.



**Note: It is mandatory to fix the cable tightly with the strain relief.**

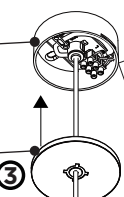


suspension set

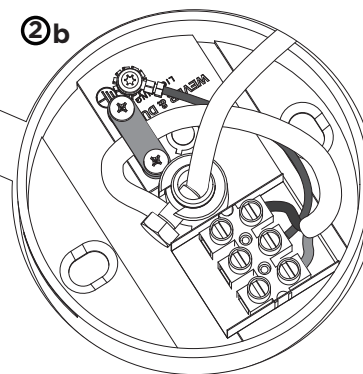


baldachin

baldachin cover



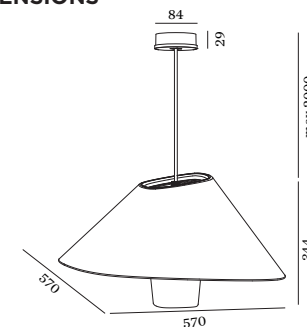
3



2b

**(You have to turn the cover counterclockwise a quarter in order to loosen it from the baldachin and mounting back on is by turning clockwise.)**

## DIMENSIONS



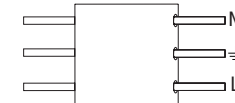
REVER SUSPENDED 1.0

## MOUNTING INSTRUCTION

1 Assemble the suspension set.

## POWER CONNECTION

2 Interior: STANDARD connection (refer to steps: a&b)

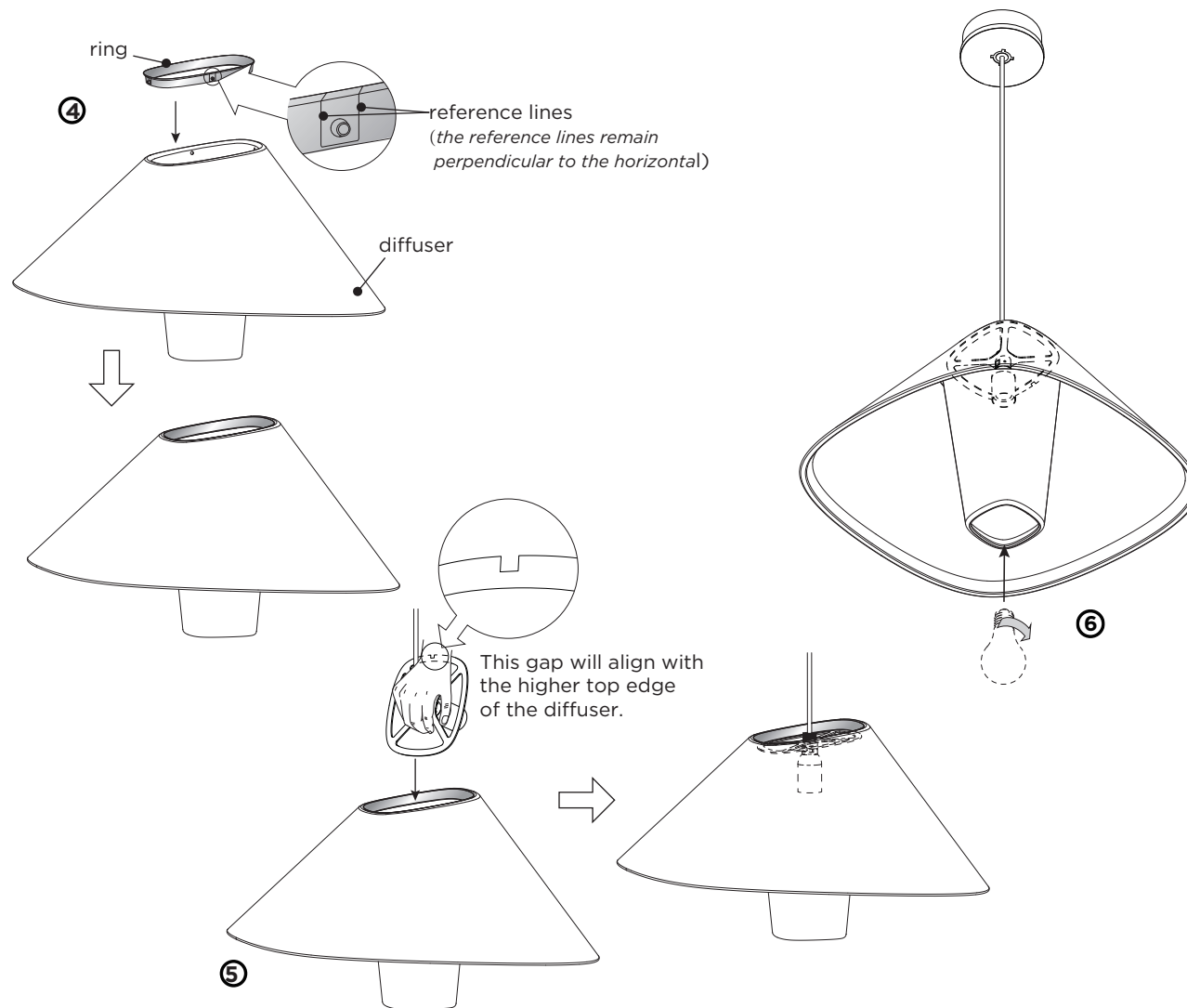


3 Adjust cable length if necessary and close the baldachin with the cover.

see the follow steps on page 2

# REVER SUSPENDED 1.0

01-Feb.-2018



- ④ Put the ring on the diffuser pressing to click.
- ⑤ Insert the suspension set in the diffuser, and adjust it to the right position.
- ⑥ Fix a bulb into the diffuser, bulb is not included.  
Applies only to **LEADING EDGE LED DIMMABLE BULB**.